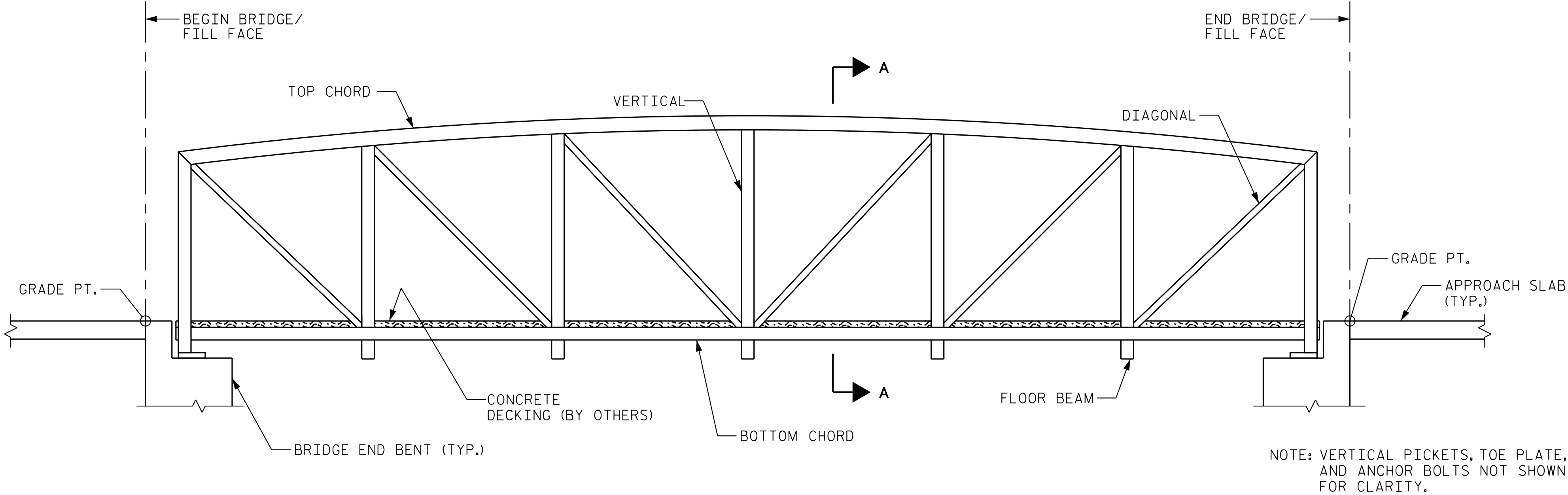


K:\RTT_Structures\Bridge\NC\015574013 - BL-0008 Clear Creek\Cad\Dgn\008_BL0008_SMU_BD.dgn

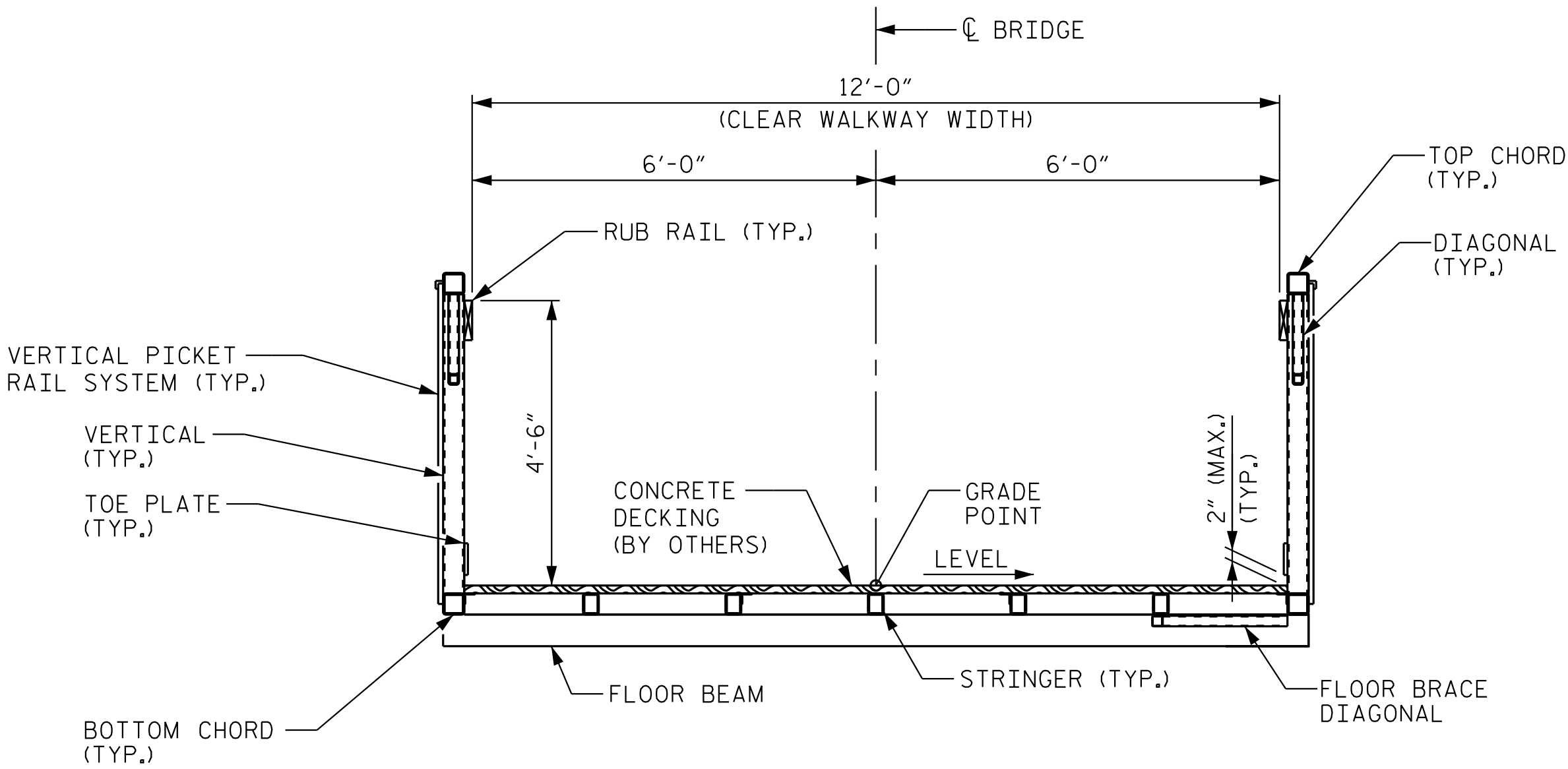
9/30/2025

NOTES

PREFABRICATED PEDESTRIAN BRIDGE DETAILS SHOWN FOR AESTHETIC REQUIREMENT ONLY AND MINIMUM LAYOUT REQUIREMENTS. CONTRACTOR'S ENGINEER SHALL BE RESPONSIBLE FOR THE DESIGN AND DETAIL OF THE SUPERSTRUCTURE.



PREFABRICATED PEDESTRIAN BRIDGE ELEVATION
(PRATT TRUSS)



SECTION A-A

NOTE:
AT ENDS OF PREFABRICATED PEDESTRIAN BRIDGE, TAPER SLOPE SUCH THAT IT IS A CONSTANT THICKNESS ACROSS THE JOINT AND CONSISTENT WITH GREENWAY PLANS. ENSURE THAT THERE ARE NO LOCALIZED LOW POINTS IN THE TRANSITION AREA.

DOCUMENT NOT CONSIDERED FINAL
UNLESS ALL SIGNATURES COMPLETED

REV. No.:	REVISION:	DATE:	DRAWN BY:	CHECKED BY:
This document, together with the concepts and designs presented herein, as an instrument of service, is intended only for the specific purpose and client for which it was prepared. Reuse of and improper reliance on this document without written authorization and adoption by Kimley-Horn and Associates, Inc., shall be without liability to Kimley-Horn and Associates, Inc. Copyright Kimley-Horn and Associates, Inc., 2024				

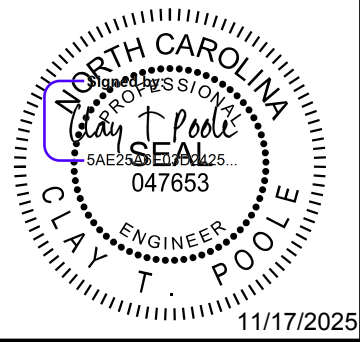
PREPARED IN THE OFFICE OF:

Kimley»Horn

NO LICENSE #F-0102
200 S TRYON ST., SUITE 200
CHARLOTTE, NORTH CAROLINA 28202
PHONE: (919) 677-2000

© 2025

PREFABRICATED
PEDESTRIAN BRIDGE
DETAILS



PROJECT:

CLEAR CREEK GREENWAY

JOB NUMBER:

015574013

SHEET NUMBER:

S-8